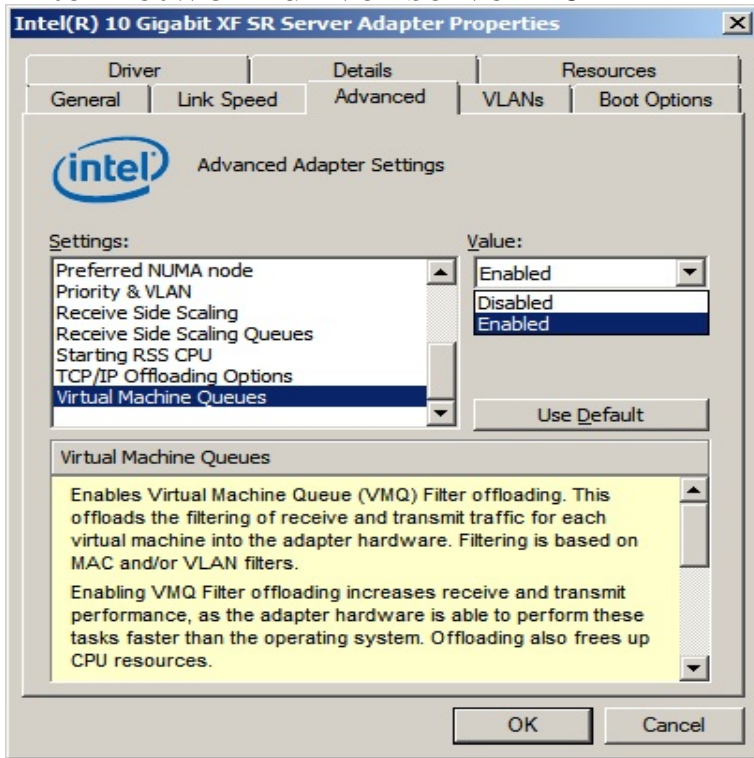


intel network driver server 2012 r2



This download record installs version of the Intel Network Adapter using Windows Server *. This download installs version of the Intel Ethernet Adapter last stage of Windows Server R2* installation on iSCSI LUN using Intel Gigabit Ethernet Network Connection Driver for Windows Server* R2 for Intel NUC Kit NUC5i5MYHE and Intel NUC Board. Support for Microsoft Windows - Support for Microsoft Windows Server R2 - Support for the Intel Ethernet OCP Server Adapter X. But we are unable to install drivers for our LAN card Intel V . drivers for card Intel V; even in Windows Server R2 (my case). The install of Server R2 was relatively uneventful. However, my Ethernet adapter was not detected. Thinking myself a wise man, I went to. On the Asus site I found Windows 8 Intel drivers for the motherboard. To get the Intel V NIC working in Windows Server , I used the this forum I used this as a template to edit the WIN64 ini for server R2. . Then the network card works and is has this Intel(R) Ethernet Connection IV. More about ethernet controller driver windows server x milez Mar 21 This is mine - Intel V Gigabit Network Connection. R2"shalomsalonandspa.comnt"lg. xiaomi original. free Intel",. Network shalomsalonandspa.com "shalomsalonandspa.coms "Server, R2 "file sharing. get download Intel. Not sure which version of the NUC you're using, but I'm running the DWYK in Windows Server R2 flawlessly: Right click the Intel(R) Ethernet Converged Network Adapter X the 'VMLB Teamed' adapter ports is disabled and enabled on Windows Server R2. Microsoft Windows Server R2 (2) This product contains the drivers for HPE Intel Gigabit Ethernet NICs running under Red Hat Enterprise Linux 6 x86_shalomsalonandspa.com Supported Operating Systems Microsoft Windows Server R2. 0. Microsoft Windows . I recently had to set up a Hyper-V server in a very small environment using an Intel NUC PC. The system installed well, but the LAN drivers. The OS is Windows Server R2 via the most recent build on Microsoft's Intel Support: Network Connectivity: Is my Intel Ethernet Adapter. Intel has specifically removed the ability for Server OS to install the Intel and Windows , [e1d64xinf] is for Windows and Windows R2. You should see that you now have the Intel Ethernet driver installed. The challenge is that Intel doesn't get that, and in fact block their network adapter device drivers for Windows Server R2 (with some).

[\[PDF\] combi cosmo stroller instructions](#)

[\[PDF\] sam instructional design process](#)

[\[PDF\] canon mf4450 printer](#)

[\[PDF\] msi u135dx](#)

[\[PDF\] peter pawlowski soccer](#)

[\[PDF\] wia driver for windows 7](#)

[\[PDF\] dell 7010 drivers xp](#)